

# EUROGOMMA

## Advanced Polyurethane wear parts for Flotation Cells



Appreciated by nature

## Comprehensive range of replacement parts

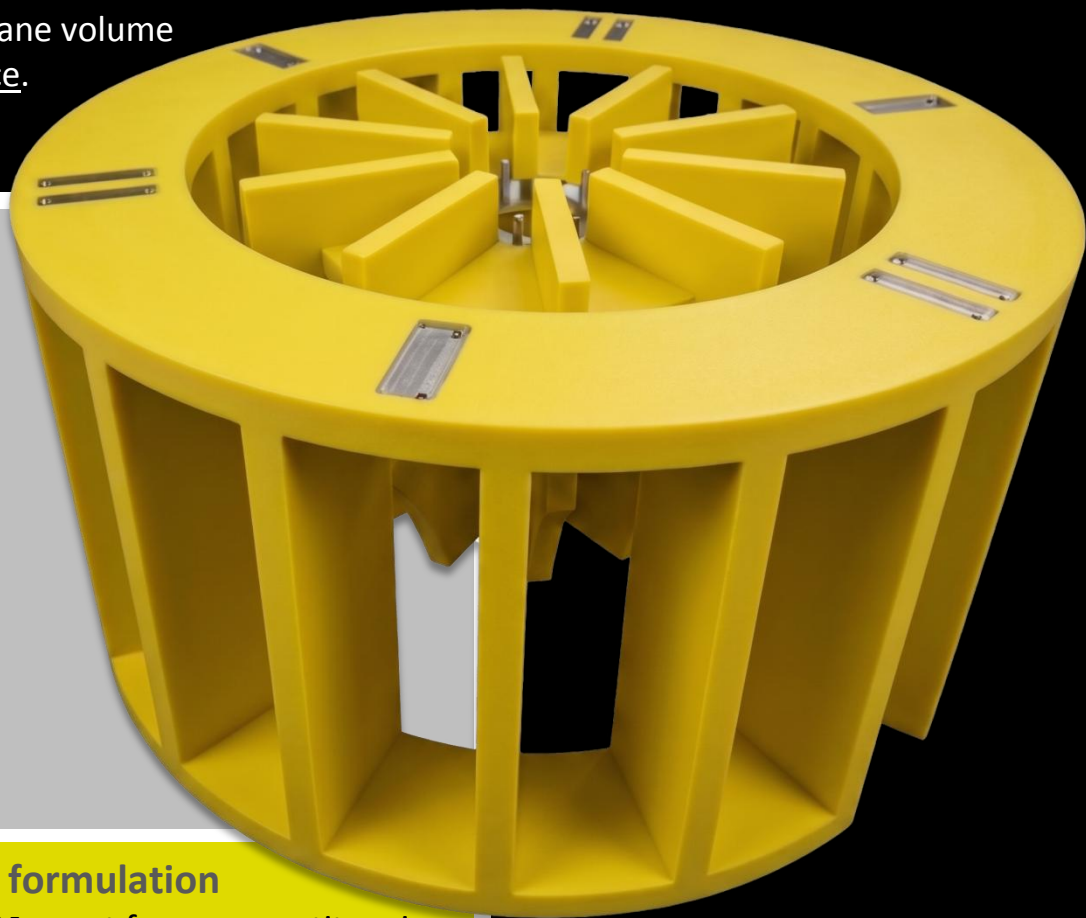
At the heart of **EUROGOMMA**'s offering for flotation cells are two essential components: rotors and stators. These wear parts are available for all major brands and models currently operating in the market, ensuring that plant operators can source reliable replacements regardless of the equipment manufacturer or cell configuration.

From the smallest laboratory-scale units to the largest industrial flotation machines, **EUROGOMMA** covers the full spectrum of sizes, manufacturing polyurethane components with a polyurethane volume of up to 500 kg per single piece.

This extraordinary manufacturing capacity speaks to the company's technical expertise and production infrastructure, making Eurogomma a trusted partner even for the most demanding large-scale applications.

## Proprietary Polyurethane formulation

What truly sets **EUROGOMMA** apart from competitors is its in-house polyurethane formulation capability. Rather than relying on off-the-shelf compounds, **EUROGOMMA**'s technical team develops and refines its own polyurethane blends, specifically optimized to achieve the highest possible levels of abrasion resistance, corrosion resistance, and resilience. This means that every rotor and stator leaving the Eurogomma facility is engineered to withstand the continuous mechanical stress, chemical aggression, and impact loads that are characteristic of flotation cell environments. The result is a measurable extension of service life compared to traditional rubber or other polyurethane wear parts, translating directly into reduced maintenance downtime and lower total cost of ownership for plant operators.







We create chemistry

## Exclusively **BASF** raw materials

The quality of a polyurethane component is only as good as the raw materials from which it is made. **EUROGOMMA** exclusively sources its polyurethane raw materials from **BASF**, one of the world's most respected chemical manufacturers.

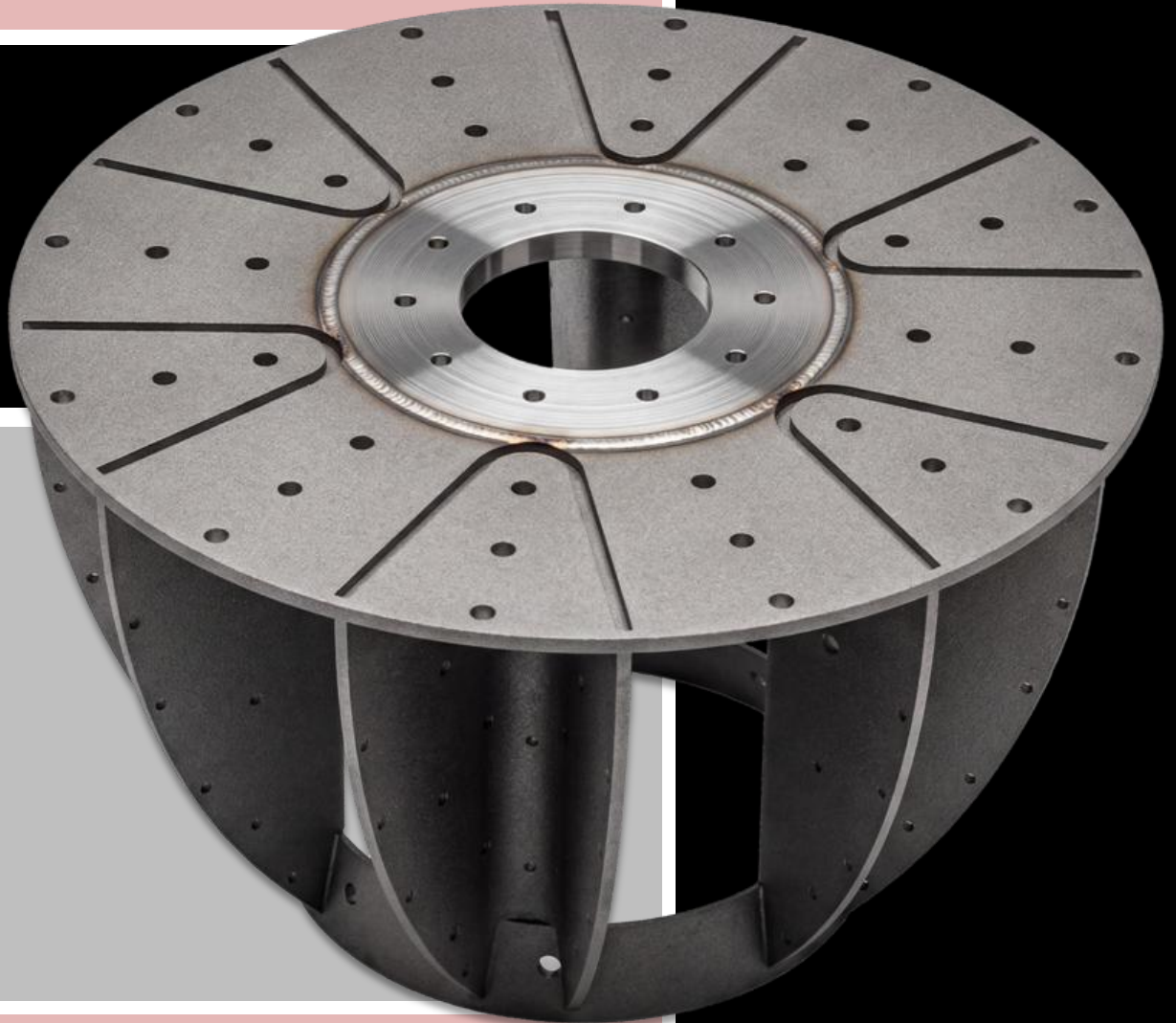


This commitment to premium raw material supply guarantees consistently superior mechanical properties across every production batch — including tensile strength, tear resistance, and elongation at break — ensuring that performance specifications are met without compromise. Equally important in today's industrial landscape, **BASF** materials carry **environment-friendly credentials**, a factor of growing significance for mining and processing companies operating under increasingly stringent sustainability requirements and ESG frameworks. Choosing Eurogomma means choosing wear parts that align with both operational and environmental goals.



## Full in-house manufacturing capability

**EUROGOMMA**'s vertical integration is a further pillar of its competitive advantage. The company designs and manufactures everything required to produce these components entirely in-house: precision steel moulds, structural steel frames, and of course the polyurethane itself.



This end-to-end control over the production process ensures the highest standards of dimensional accuracy, repeatability, and quality consistency — from the first prototype to large series production runs.

For flotation cell operators seeking longer-lasting, environmentally responsible, and technically superior wear parts, **EUROGOMMA** represents the benchmark in polyurethane component manufacturing.